



Loewe **stellar 97**

The big screen craft design TV with Loewe dual channel dr+

High performance 97 inch OLED module designed, engineered and tailored by Loewe in Kronach

Dual channel dr+ system with twin triple-tuner and SSD for multi recording

Full support of HDMI 2.1 and Ultra HD @ 144 Hz VRR for high-speed gaming

Rich variety of smart streaming apps and VOD services with Vidaa OS

Powerful integrated 300 watts sound bar for superior audio performance

Integrated ultra-slim wall mount

Sophisticated design with real materials and magic.light

NETFLIX **YouTube** **prime video** **Disney+** **Apple tv** **Rakuten TV** **DEEZER** **HD +** **ZATTOO**

Works with Apple AirPlay **works with alexa** **WiFi CERTIFIED** **matter** **VIDAA**

Dolby VISION **Dolby ATMOS** **dts HD** **dts X** **Bluetooth** **CERTIFIED USB** **HDMI**

LOEWE. was established by the Loewe brothers as Radio Frequenz GmbH in Berlin in 1923.

Today we still design, develop and produce consumer electronics – Made in Germany.

Data sheet (preliminary)

Loewe **stellar 97**

June 2025

LOEWE.

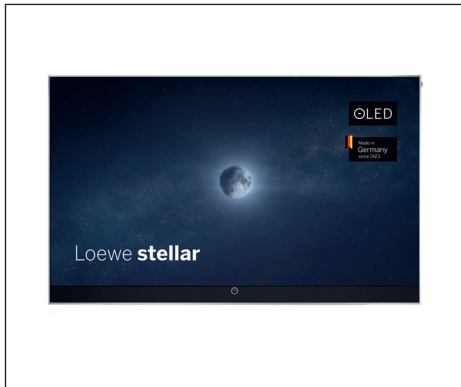
Home of Excellence.

www.loewe.tv



Loewe stellar 97

The big screen craft design TV with Loewe dual channel dr+



Home-made OLED module

The latest generation and technology of 97 inch OLED open cell with master black polarizer offer highest brightness and unparalleled motion picture performance in Ultra HD resolution.

The OLED module is designed, engineered and tailored by Loewe in Kronach with alu-compound back-forming, massive alu frame and aluminum back-cover.

Pre-calibrated in our factory and supporting Dolby Vision IQ, this display meets all relevant filmmaker picture and colour standards for a perfectly natural and impressive reproduction of movie, TV and games.

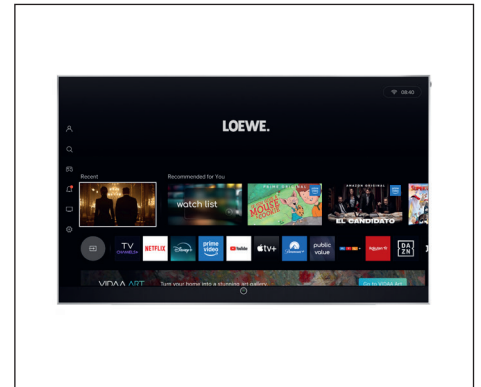


Loewe dual channel dr+

Equipped with a dual channel chassis, double triple-tuners and a 1 Terabyte SSD, the Loewe dr+ system offers multiple recording possibilities from EPG programmed recording to spontaneous timeshift functions.

Tuners for DVB-T2/C/S2 HD and an easy accessible CI slot support various reception and recording scenarios.

The Solid State Drive is perfect for video applications and both energy efficient, extra fast and absolutely noise-less for maximum comfort.



Vidaa OS

Loewe os9 based on Vidaa is a most convenient and fast smart operating system. The app store offers a curated selection of smart apps and a rich variety of video-on-demand services, including e.g. Netflix, YouTube, Disney+ and more.

The system is also compatible with advanced networking features: The support of broad-used dlna, Miracast and Apple AirPlay allow comfortable content sharing and control via the home network.

Flexible connectivity with HDMI 2.1 inputs including Ultra HD @ 144 Hz VRR ensures full support of latest game consoles.



Integrated sound bar and magic.light

Behind a special acoustic fabric in matt black, an impressive soundbar with 300 watts fires directly to the front. Framed in perfect harmony with the Loewe signature.ring and the Loewe magic.light - for a discretely welcome and farewell animation or an atmospheric illumination during movie watching.

Simply adjust it in the menu as desired in any colour of the rainbow, at different brightness and saturation levels, by the touch of a button on the Loewe remote.

The dedicated Center-Input allows to apply Loewe stellar 97 as the important Center-Speaker in a multi channel home cinema environment.



Design craftsmanship

Sophisticated craft design and clever construction details from the in-house Loewe design and innovation studio.

Created with selected real materials like a four-sided brushed full aluminum frame in a diamond-cut shape, real aluminum on the back panel.

All connections are hidden, and all cables are well guided and hidden by the integrated cable management plus cable covers in the rear cabinet. The solid VESA bolts support any mounting solution.



Clever wall mount

The already integrated Loewe wall mount stellar, invisibly covered yet simply sliding out from the rear cabinet, allows an impressive display presentation closely attached to the wall.

Loewe stellar 97

The big screen craft design TV with Loewe dual channel dr+

Achievements*



“The TV model stellar shines with latest display technology, powerful hardware and new design language which lift an OLED TV in new dimension.”

International Forum Design, Spring 2024, about Loewe stellar
iF DESIGN AWARD 2024



reddot winner 2024

“The Loewe stellar is an OLED television that, thanks to the modular construction of its display module, offers a multitude of possibilities for material combinations.”

Red Dot, Spring 2024, about Loewe stellar
reddot winner 2024



“The Loewe stellar has an extraordinary extraordinary look with a perfect 360-degree design, consistent and unmistakable for all display sizes.”

audiovision magazine, edition 10/2024, about Loewe stellar
BEST DESIGN



“Their sophisticated design with selected materials and magical moments of light and motion make them visual highlights in any interior.”

Satvision magazine, edition 01/2025, about Loewe stellar
SATVISION DESIGN AWARD



“Forged for eternity: With the stellar, Loewe skilfully implements current technology trends: classic TV virtues, an integrated SSD, a powerful panel and an extraordinary housing design make this television a real design and technology statement.”

HDTV magazine, edition 1/2025, about Loewe stellar 65 dr+
Test result: OUTSTANDING
Ratings: Highlight | Home Cinema Tip | Gaming Tip | Design Innovation



“If you don't want just any random TV set in your home and you have a preference for something special, for extravagant design and for modern technology, the stellar models have it all.”

Euronics Trendblog, 10.02.2025, about Loewe stellar

* predecessor model Loewe stellar (2024)

Loewe stellar 97

The big screen craft design TV with Loewe dual channel dr+

Achievements*



“From the conception of the design, to the development of hardware and software, construction, prototyping and final assembly final assembly of the stellar TV models all development steps at Loewe in Kronach.”

audiovision magazine, edition 10/2024, about Loewe stellar 65 dr+
BEST OLED



“The integrated, front-firing soundbar with 10 drivers, 80 watts of total music power and Dolby Atmos sits behind a high-gloss lacquered metal grill and ensures best speech intelligibility, a wide stereo stereo stage and dynamic film sound.”

audiovision magazine, edition 10/2024, about Loewe stellar 65 dr+
BEST SOUND



“Loewe stellar is not only luxury in terms of its design, but also does its utmost technically to earn a place in the hall of fame of TV legends.”

connect magazine, edition 01/2025, about Loewe stellar 65 dr+
Test result: OUTSTANDING



“In addition to the exterior, the excellent picture quality, in which the high peak brightness and perfect black level ensure a dynamic contrast display, as well as the features (...) are impressive.”

Satvision magazine, edition 02/2025, about Loewe stellar 55 dr+
Test result: VERY GOOD



“Made in Germany: The top model is perfectly finished. (...) Only the best is built into the Loewe stellar. (...) It delivers truly excellent pictures. (...) The high price is justified by top marks in all categories.”

Guter Rat magazine, edition 02/2025, about Loewe stellar 55 dr+
Test result: VERY GOOD



“With the stellar 77 dr+, Loewe has launched a television that is exceptional in many aspects and sets new audiovisual and quality standards.”

audiovision magazine, 03/2025, about stellar 77 dr+
Test result: VERY GOOD
Ratings: Highlight, Referenz

* predecessor model Loewe stellar (2024)

Loewe **stellar 97**

The big screen craft design TV with Loewe dual channel dr+

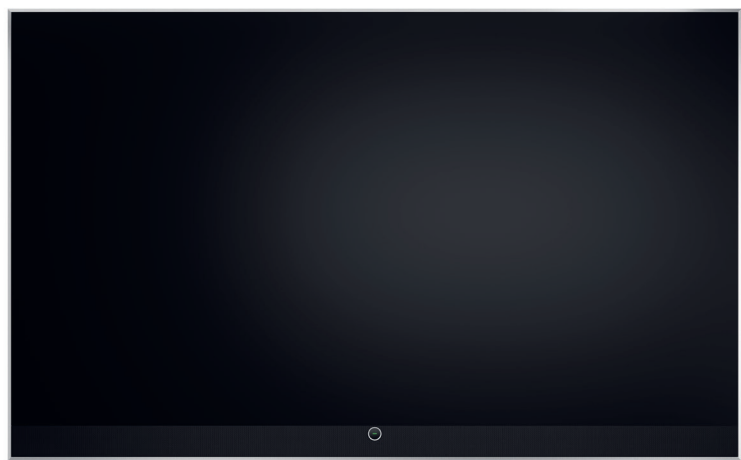
TV

Loewe stellar 97

Scope of delivery includes TV set with integrated sound bar and wall mount
stellar 97: W* x H x PD / TD = 218,2 x 133,8 x 7,0 / 7,1
flat and tiltable mounting

 **alu brushed + alu**

| Model | Article |
|------------|---------|
| stellar 97 | 64468 |



Dimensions in cm: W = width, H = height, PD = product depth, TD = total depth. Technical modifications and errors excepted.
* In the area of the side-mounted Loewe clip, the width of the TV set may increase by up to 1 cm, depending on the type of set.

Loewe **stellar 97**

The big screen craft design TV with Loewe dual channel dr+

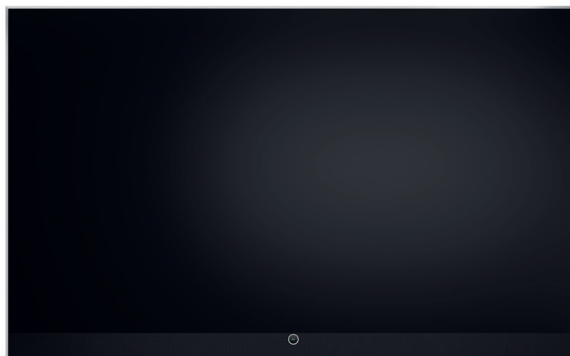
Setup solutions

Wall solutions

wall mount slim 432

stellar 97: W* x H x PD / TD = 218,2 x 133,8 x 7,0 / 10,2

flat mounting



Dimensions in cm: W = width, H = height, PD = product depth, TD = total depth. Technical modifications and errors excepted.

* In the area of the side-mounted Loewe clip, the width of the TV set may increase by up to 1 cm, depending on the type of set.

Data sheet (preliminary)

Loewe **stellar 97**

June 2025

Loewe stellar 97

The big screen craft design TV with Loewe dual channel dr+

System components

Loewe multi.room amp

Stereo amplifier for multiroom and homecinema installations with 1.200 watts total music power



black



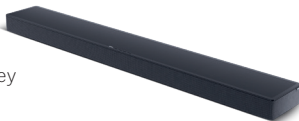
| Model | Article |
|----------------|---------|
| multi.room amp | 61600 |

Loewe klang bar5 mr

5.1.2 Dolby Atmos soundbar with wireless subwoofer and 800 watts total music power



basalt grey



Loewe klang bar3 mr

3.1 Dolby Atmos soundbar with integrated subwoofer and 360 watts total music power



basalt grey



Loewe klang sub5

Any number of klang sub5 can be connected to a klang bar3 mr or klang bar5 mr at the same time



basalt grey



Loewe klang mr5

Wireless active speakers with 180 watts for multichannel home cinema or multiroom audio



basalt grey



Loewe klang mr3

Wireless active speakers with 150 watts for multichannel home cinema or multiroom audio



basalt grey



Loewe klang mr1

Wireless active speakers with 30 watts as rear surround or for multiroom audio



basalt grey



Loewe remote klang mr

Multifunctional IR remote control for Loewe klang mr and Loewe klang bar to operate all basic functions and sound settings



black



Loewe **stellar 97**

The big screen craft design TV with Loewe dual channel dr+

Additional information

www.loewe.tv



my Loewe app



Your Loewe contact

We are happy to help personally.

Our Loewe Customer Care Center is here for you:
Monday to Friday 09:00 – 17:00 o'clock
ccc@loewe.de | 0049 9261 99 500

Your Loewe dealer

Technical data (preliminary)

Loewe stellar

97 dr+

| | |
|---|---|
| Image | |
| Screen resolution (pixels) | Ultra HD (3840 x 2160) |
| Display technology | OLED (WRGB) |
| Screen diagonal (cm / inch) / Response time (ms) | 245 / 97 / 1 |
| Panel luminance* (ca. cd/m²) / Viewing angle (h/v) | 1.100 / 120° |
| Ex-works individual panel calibration / white D65 / colour RGB | ● / ● / ● |
| UHD scaling / Auto dimming / AI PQ / Adaptive contrast / 24p | ● / ● / ● / ● |
| HDR (HLG / HDR10 / HDR10+ / Dolby Vision) / WCG | ● / ● / ● / ● (incl. IQ PD) / ● |
| Reception | |
| DVB-T2 / C / S2 / HD / twin triple-tuner | ● / ● / ● / ● / ● |
| DVB radio / DiSEqC / Unicable / dual channel | ● / ● / ● / ● |
| MPEG / MPEG2 / MPEG4 (H.264) / HEVC (H.265) | ● / ● / ● / ● (incl. H.266) |
| Zattoo / HD+ | ● / ● |
| Audio | |
| Power (watts sine / music) / driver (active + passive) | 2x 65 / 2x 130 / 6 > 2x 75 / 2x 150 / 6 |
| Acoustic speaker concept | active bar + bass reflex |
| Front firing / down firing / 2-channel crossover | ● / — / ● |
| Dolby: Audio / Digital / Digital Plus / Atmos / DTS: HD | ● / ● / ● / ● / ● |
| Class-D amp / Auto volume / AI AQ / EQ / Dynamic loudness | ● / ● / ● / ● / ● |
| Operation and apps | |
| Chassis / os / languages (menu, help) / app store | SL8 / os9 / 34 / ● |
| my Loewe app / smart apps (all: Android + iOS) | ● / VIDAA Smart TV app |
| Voice control: Alexa Skills / other | ● / VIDAA voice |
| EPG / Number of stations in channel list | ● / 10.000 |
| Loewe dr+: capacity | 1TB SSD |
| Multi recording / USB recording / timeshift | ● / o / ● |
| Mediatext (HbbTV) / Teletext / splitscreen | ● / ● / ● |
| Media player / dlna player / browser | ● / ● / ● |
| TV Channel+ / VOD premium services / AI comfort features | ● / ● / ● |
| Parental lock / Automatic turn-off / Timer | ● / ● / ● |
| Software update (via USB / Internet) / Hotel mode | ● / ● / ● |
| Connectivity and interfaces | |
| Antenna IEC / satellite F / CI+ V1.4 ECP Slot | 1 / 2 / 1 |
| HDMI | 2 x HDMI 2.0b, 2 x HDMI 2.1 |
| HDMI UHD / ALLM / VRR | ● / ● / ● (144 Hz) |
| HDCP 2.2 / HDMI-CEC / ARC / eARC | ● / ● / ● / ● |
| USB-A: number x power | 1 x 1,0 A, 1 x 2,0 A |
| USB-C: number x power | 2 x 1,0 A |
| Bluetooth / Miracast / AirPlay / Matter | ● / ● / ● / ● |
| LAN / WLAN (Wi-Fi) / Wake on LAN / Wake on Wifi | ● / ● / ● / ● |
| TOSLINK / center in (Cinch L/R) | ● / ● |
| Audio out control: fix / variable / sub (3.5 mm) | ● / ● / ● |
| Loewe magic.light / magic.motion | ● / o (via USB-A 2,0A) |
| Home automation / Control4 / Crestron | ● (via IP) / ● / ● |
| Power socket | C17 (D type) |
| Energy | |
| EU energy efficiency class: SDR (EEI) / HDR (EEI) | G / F |
| EPREL registration No.: https://eprel.ec.europa.eu | 2383987 |
| Mains voltages / Power switch / Off mode (watts) | 220-240V, 50 / 60 Hz / ● / 0,0 |
| Energy consumption SDR / HDR (ca. kWh/1000h) | 190 / 170 |
| Power consumption max. @ audio 1/8 volume (watts) | 850 |
| Power consumption standby / network standby (watts) | 0,4 / 0,8 |
| Dimensions (* incl. signature flag: ca. 1 cm) | |
| Weight (ca. kg) excl. / incl. standard setup solution | 66,5 / 68,1 |
| W* x H x D (cm) without setup solution | 218,2 x 133,8 x 7,0 |
| VESA support / Kensington lock | 400 x 200 / — |
| Scope of delivery | |
| Speaker | integrated (active soundbar) |
| Setup Solution / rotate-able | integrated wall mount / fix |
| Remote control (incl. batteries) | Loewe remote alu (2x AAA) |
| Manual / power cord | ● / ● (2,5 m, black) |
| Others | welcome box |
| Optional accessories | |
| Selection of recommended setup solutions | wall mount slim 432 |
| and audio systems | multi.room amp |

● = available, o = optional, — = not available
* according to panel spec typ. values @ HDR 10%

Technical changes, delivery options, errors and price changes reserved. All product and company names are trademarks™ or registered® trademarks of their respective owners. Their use does not imply any affiliation with or endorsement by these companies. Digital services and content (e.g. apps) and server platforms are provided by third parties. Available for download in the App Store. Observe the terms of use of the third party on the device. The provision, availability (including in certain territories), updating and termination of the provision of this digital content and services on the device are at the sole discretion of the third party. Some services may not be available at the time of purchase of this product. Internet access required. Separate (paid) subscriptions and/or membership required. Ultra HD and HDR availability subject to subscription plan, internet service, device features and content availability.